

DIY Boss ds-1 keeley sem and ultra mod combination

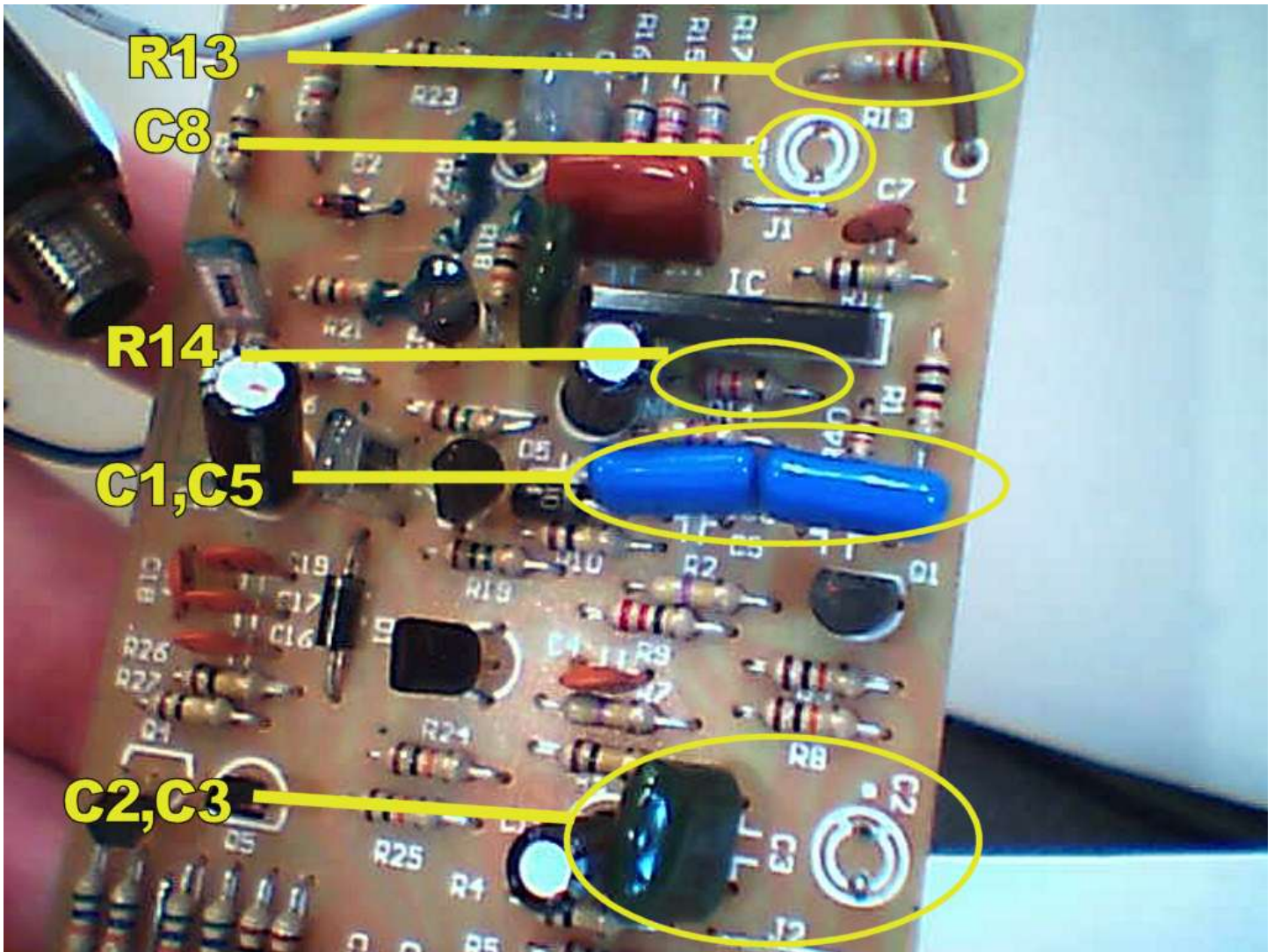
Location	Mod value	Digikey Part Number (www.digikey.com)
C1	0.1 UFMetal Film	P4525-ND
C2	1 UF Metal Film	P4675-ND
C3	0.1 UF Metal Film	P4525-ND
C4	470pF Silver Mica	338-1043-ND
C5	0.1 UF Metal Film	P4525-ND
C7	220pF Silver Mica	338-1046-ND
C8	1 UF Metal Film	P4675-ND
C9	1 UF Metal Film	P4675-ND
C11	0.047 UF Metal Film	P4521-ND
C12	0.1 UF Metal Film	P4525-ND
C13	0.1 UF Metal Film	P4525-ND
C14	1 UF Metal Film	P4675-ND
D5	3mm Red LED	Any led will work the same
R2	620K, 1% Metal Film	P620KCACT-ND
R13	2K4, 1% Metal Film	P2.40KCACT-ND
R14	1K5, 1% Metal Film	P1.50KCACT-ND
R35	1K, 1% Metal Film	P1.00KCACT-ND

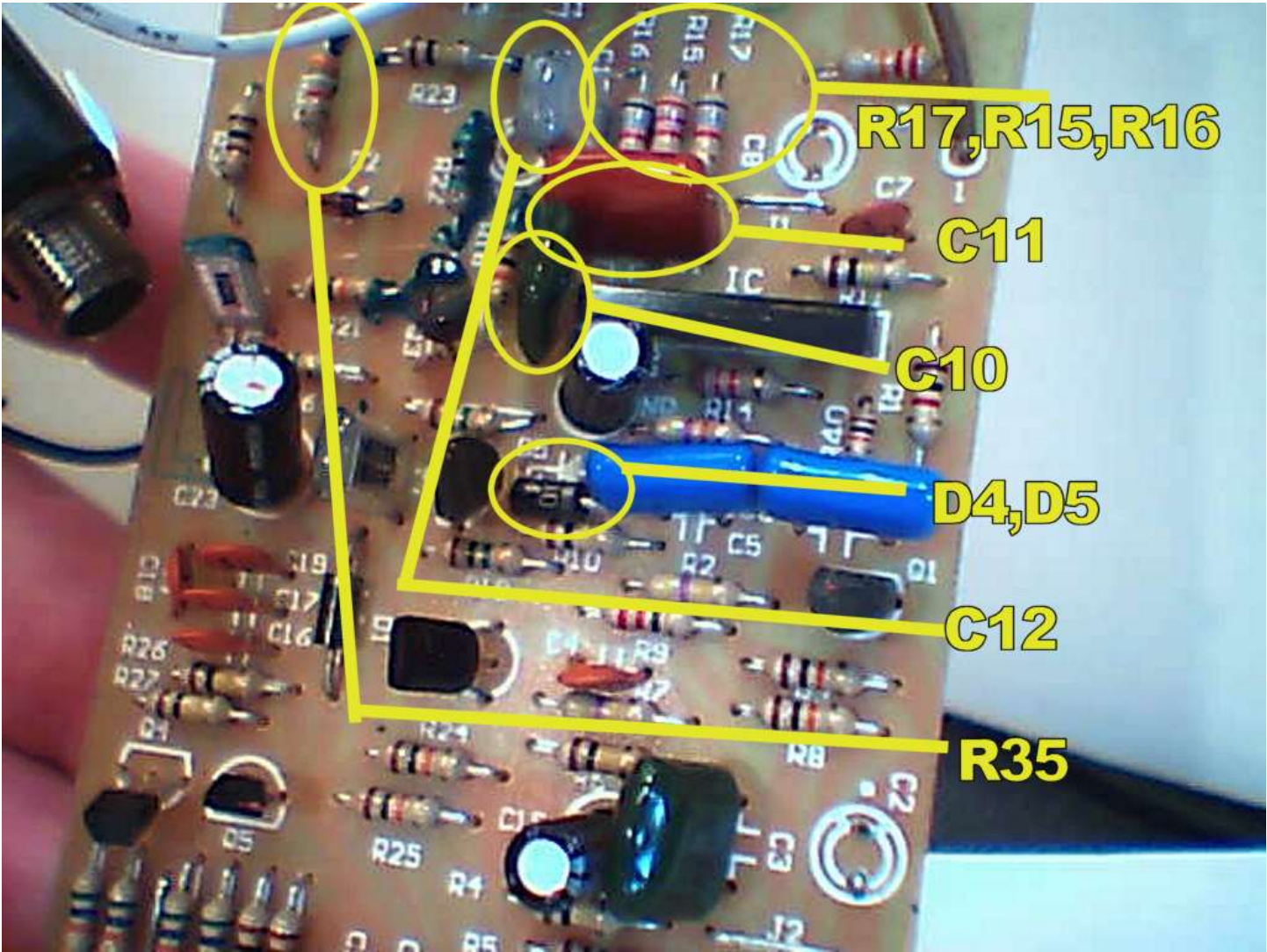
R39	20K, 1% Metal Film	P20.0KCACT-ND
D5 –install in parallel with the led	47pF Silver Mica	338-1084-ND

Tips:

-make one change at a time, then test it, to make sure nothing went wrong! If it doesn't work, then you'll know where to look!

--good luck, and let m know what you think!





R17,R15,R16

C11

C10

D4,D5

C12

R35